

SPARTAN



FLEET EQUIPMENT CORPORATION
THE MOST TRUSTED NAME IN TIRE TRUCKS.
Franklin Lakes, NJ ■ 800.631.0873 ■ www.fectrucks.com





The Spartan Mini Plus OTR service vehicle is available in lengths of 13' and 15'. Our unique modular construction utilizing aircraft-grade fasteners allows this workhorse to stay flexible, yet durable. It also allows the body to be repaired quickly in the case of an accident, minimizing downtime. Most body parts and tool boxes can be unbolted and quickly changed with pre-painted replacements to keep you working. Your customers demand the best, so should you.



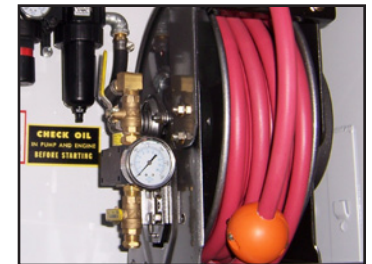
H65 air compressor with PTO/hydraulic or diesel engine drive. 60 CFM with a 23 or 35 gal. tank. Available under floor (shown) or in bed.



Hose reels commonly placed on left side above the crane controls. 1/2" X 50' and 3/8" X 50' heavy duty reels with hose end guard,



Tool drawers available for carrying small parts and tools.



Optional airing station for easy tire inflation.



2000 lb. liftgate with heavy duty steel frame and aluminum platform. Self locking two-point spring loaded lock system locks platform closed when stored for travel. Optional self locking tire stacking rack on platform.

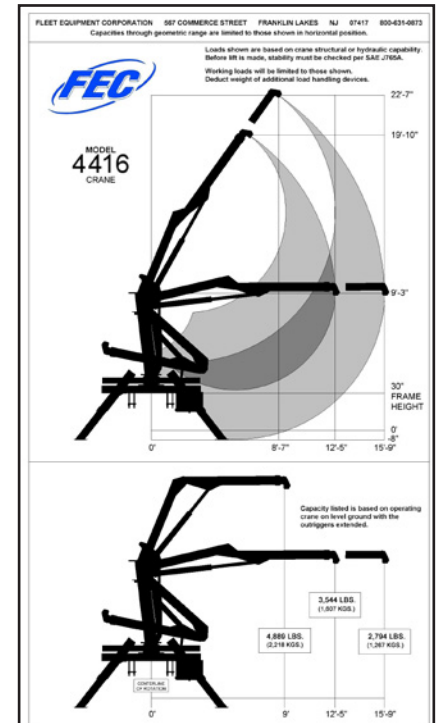


LED tail lights are standard. Optional 3-way and 4-way LED strobes systems available. High power LED work lights can be placed for best visibility.

4416 Crane	
44,000 ft. lbs. rating	
Crane Capacity Rating	4,400 lbs. at 10'
Maximum Reach	15'-9"
Crane Weight	2656 lbs.
Chassis RBM Required	520,000 in.lbs.

CRANE FEATURES

- Manual crane controls on both left and right sides of the vehicle.
- Rack and pinion rotation system offers rugged durability and simplicity.
- Load holding valves on all lift cylinders, chrome plated cylinder rods and tube walls.
- Center mounted crane offers better weight distribution to chassis suspension.
- Crane nose will accept FEC push bar.
- Self lubricating bearing surface on all slide tubes.
- Heavy duty PTO and hydraulic pump.
- Optional radio remote control with manual lever back up is available.



7-pin trailer plug available for testing trailer lights. Optional backup camera for safety while reversing.



Large tool compartments are available for locked tool storage.

FLEET EQUIPMENT CORPORATION
THE MOST TRUSTED NAME IN TIRE TRUCKS.
 Franklin Lakes, NJ ■ 800.631.0873 ■ www.fectrucks.com

