

# SPARTAN



**FLEET EQUIPMENT CORPORATION**  
**THE MOST TRUSTED NAME IN TIRE TRUCKS.**  
Franklin Lakes, NJ ■ 800.631.0873 ■ [www.fectrucks.com](http://www.fectrucks.com)





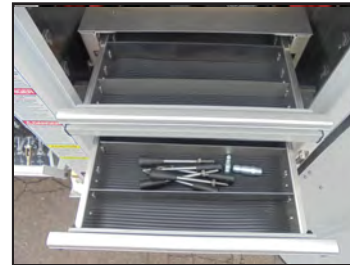
The Spartan Mini Plus OTR service vehicle is available in lengths of 13' and 15'. Our unique modular construction utilizing aircraft-grade fasteners allows this workhorse to stay flexible, yet durable. It also allows the body to be repaired quickly in the case of an accident, minimizing downtime. Most body parts and tool boxes can be unbolted and quickly changed with pre-painted replacements to keep you working. Your customers demand the best, so should you.



H65DC air compressor with PTO/hydraulic drive available under floor or in bed.



Hose reels commonly placed on left side above the crane controls. 1/2" X 50' and 3/8" X 50' heavy duty reels with hose end guard,



Tool drawers available for carrying small parts and tools.



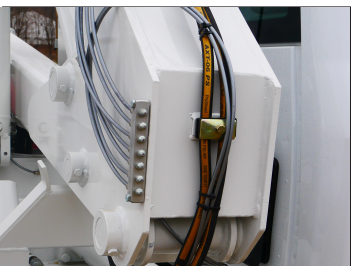
Optional airing station available for easy tire inflation.



2000 lb. liftgate with heavy duty steel frame and aluminum platform. Self locking two-point spring loaded lock system locks platform closed when stored for travel. Optional self locking tire stacking rack on platform.



LED tail lights are standard. Optional 3-way and 4-way LED strobes systems available. High power LED work lights can be installed for improved visibility.



Optional grease manifold available on all FEC cranes.

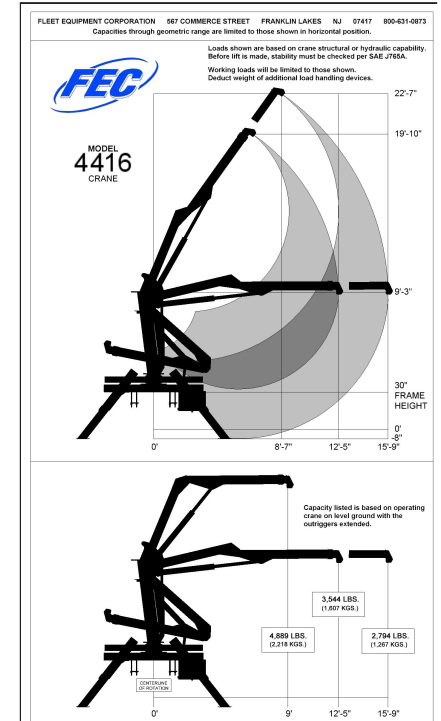


Large tool compartments are available for locked tool storage.

4416 Crane	
44,000 ft. lbs. rating	
Crane Capacity Rating	4,400 lbs. at 10'
Maximum Reach	15'-9"
Crane Weight	2656 lbs.
Chassis RBM Required	520,000 in.lbs.

### CRANE FEATURES

- Manual crane controls on left side of the vehicle.
- Rack and pinion rotation system offers rugged durability and simplicity.
- Load holding valves on all lift cylinders, chrome plated cylinder rods and tube walls.
- Center mounted crane offers better weight distribution to chassis suspension.
- Crane nose will accept push bar.
- Self lubricating bearing surface on all slide tubes.
- Heavy duty PTO and hydraulic pump.
- Optional radio remote control with manual lever back up is available.



**FLEET EQUIPMENT CORPORATION**  
**THE MOST TRUSTED NAME IN TIRE TRUCKS.**  
Franklin Lakes, NJ ■ 800.631.0873 ■ [www.fectrucks.com](http://www.fectrucks.com)

